

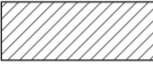


# Ниво -6.80, -7.10 Етаж -1

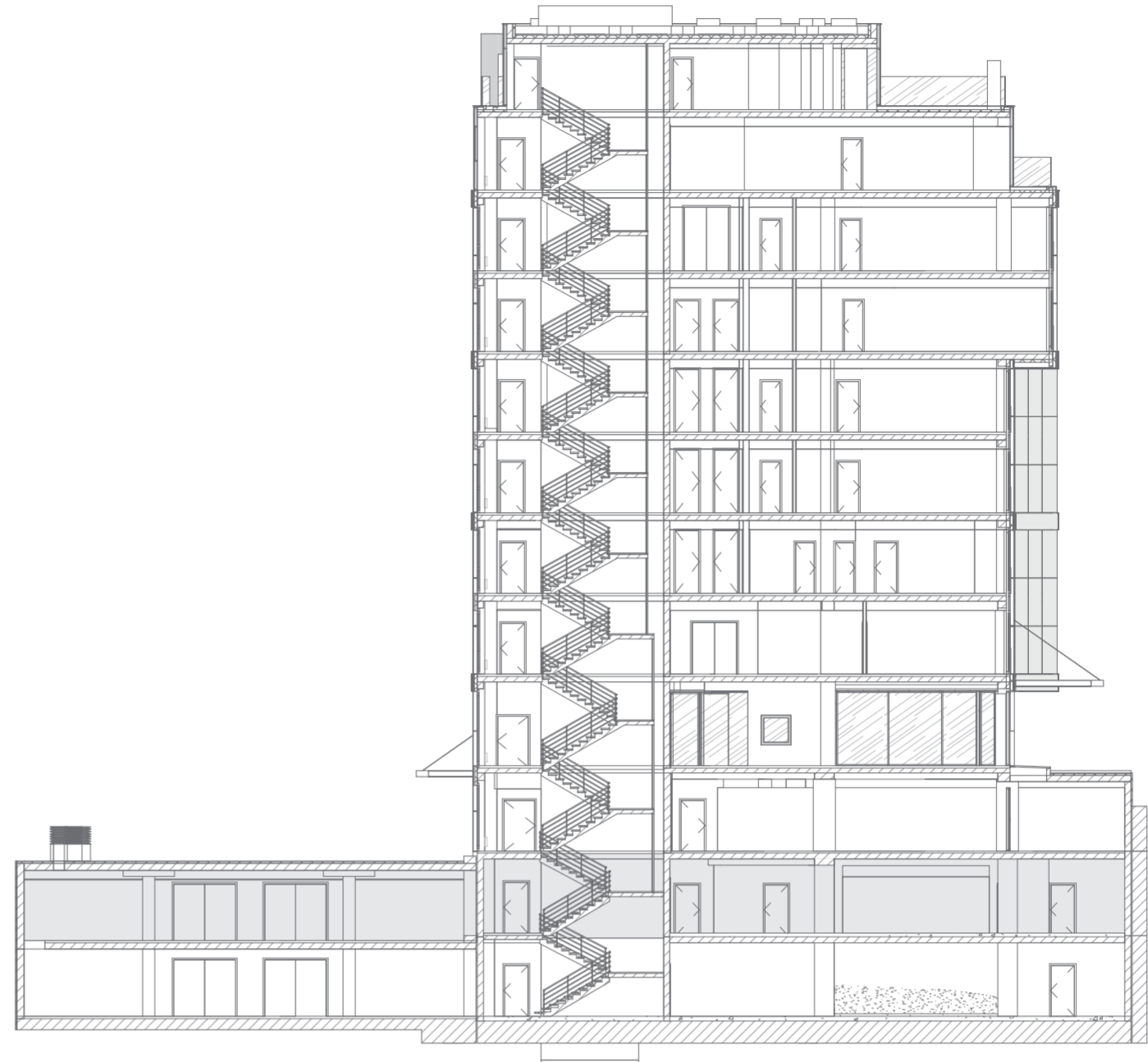
Над 50 паркоместа, складове, перално помещение и винарска изба към бутиковия ресторант.

# Elevation -6.80, -7.10 Floor -1

Over 50 parking spaces, storage facilities, laundry, and the cellar of the boutique restaurant.

- ① Над 50 паркоместа.  
Over 50 parking spaces.
- ② Складови помещения.  
Storage facilities.
- ③ Перално помещение.  
Laundry.
- ④ Винарска изба.  
Cellar.

-  Стоманенобетонен елемент.  
Structural element.
-  Зидария 25 см.  
Brick wall thickness 25 cm.
-  Преградни стени по система на Knauf.  
Knauf system drywall partition.



-6.80 Етаж -1  
-7.10 Floor -1

